

Tarkett Lino

LINOLEUM

40

Naturally
modern

NATURALLY MODERN

Made from natural constituents and enriched by more than a century of heritage, Tarkett Lino is a modern solution to the challenges of contemporary interior design.

Modern Design

Our collection reflects the natural elements that inspire it, with a broad palette of subtle shades and patterns, ideal for coordinating floors, walls and even furniture. Using texture and colour, Tarkett Lino can define spaces, highlight architectural details and lend interior surfaces, both straight and curved, a sense of harmony.

Modern Sustainability

Made from natural materials, our Lino collection provides sustainable, durable flooring for commercial applications. But we go the extra mile in environmental terms, following Cradle to Cradle™ principles and closing the loop with ReStart®, our take-back and recycling programme.

Modern Performance

While honouring the tradition behind our Lino, we also use modern technology to ensure it can tackle today's challenges. Combining a legacy of expertise with a passion for performance, our flooring is durable, functional and easy to maintain.

Tarkett Human-Conscious Design™

03	Naturally modern
04	TARKETT LINO
06	Modern Design
24	Modern Sustainability
25	Modern Performance
32	VERSATILE USE
34	HERITAGE
36	RANGE OVERVIEW
40	REFERENCES /CASE STUDIES
42	TECHNICAL DATA

TARKETT LINO

LinoWall cotton 122 / Originale blossom 435

Natural, versatile and sustainable, combining tradition, craftsmanship and innovation, Tarkett Lino offers a modern approach to the flooring needs of today and lifestyles of tomorrow.

MODERN DESIGN

Rich, authentic and versatile

- Modern flooring with a **matt finish** to protect and highlight its authentic look.
- Modern, **subtle patterns and a palette of contemporary colours** that harmonise easily.
- Modern layout with a versatile collection to inspire and **coordinate all the elements in a space**, from floors to walls and even furniture.

MODERN SUSTAINABILITY

Our 2.5mm Tarkett Lino range delivers the lowest carbon footprint in its category throughout its lifecycle*

- Tarkett Lino is a bio-based product, made from **natural and renewable ingredients**.
- Originale is **Cradle to Cradle Certified™ Gold** (a first in this market) and **the rest of the range is C2C Certified™ Silver**.
- Contains recycled materials and can itself **now be recycled after use** via our ReStart® take-back and recycling programme.
- **Sustainably produced** at our plant, where we work continuously to reduce our environmental footprint.
- Promotes health and well-being by offering **optimal indoor air quality** ($\text{VOC} \leq 10 \mu\text{g}/\text{m}^3$), **and is approved by Allergy UK**.

MODERN PERFORMANCE

Blending the best of tradition with modern performance

- **Superb durability** from our **xf² finish**, with excellent resistance to mechanical wear and stains, ideal for demanding environments.
- **Versatile, functional, high-performance** flooring solutions to meet a wide variety of needs (acoustic, conductive, static dissipative, wall covering...)
- **Tarkett Lino has naturally anti-bacterial properties** against the most common bacteria, such as E-coli and MRSA.

MODERN DESIGN



LinoWall olive 155 / Veneto khaki 757

A modern, living material

Not 'just' a covering, Tarkett Lino is a material. One that is natural and noble. It is unique, with its own distinctive hues and matt aspect.

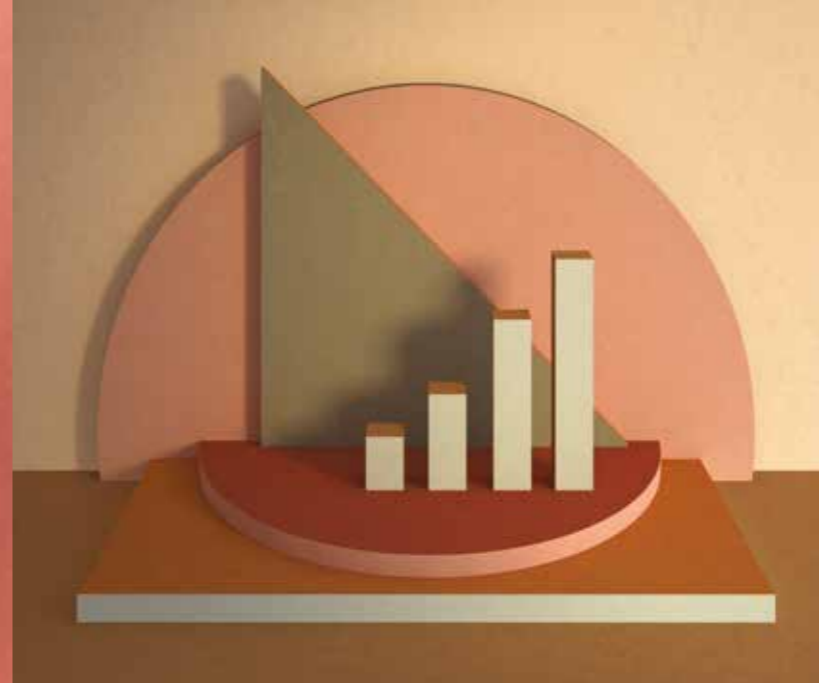
In colours as natural as the elements from which it is made, it can cover almost any surface, from floors and walls to furniture.

Tarkett Lino is the perfect medium for architects and interior designers, allowing them to give any space its own identity.

Modern material: Tarkett Lino's **authentic matt look** gives it depth and tactile appeal. Like wood, stone or even marble, it holds the fascination of a noble raw material.

Modern look: the wide choice of colours and patterns coordinates easily with other neutral materials. Tarkett Lino's fresh, natural, tone on tone design creates an elegant effect that can be either contemporary or timeless. The different collections will complement decors from traditional (Veneto) to modern (Etrusco).

Modern layout: discover our **unique LinoWall range**, which can create the perfect match between walls and floors, building blocks of colour or creating contrasts on different surfaces. The possibilities are endless, LinoWall even being capable of covering furniture to rewrite the rulebook for interiors.



MODERN RANGE

Linoleum xf²

Our range of natural and enriched colours is designed to create coordinated, beautifully contemporary interiors. The collection comes with xf² surface technology for optimal resistance and easy maintenance in heavy-traffic areas.

Veneto

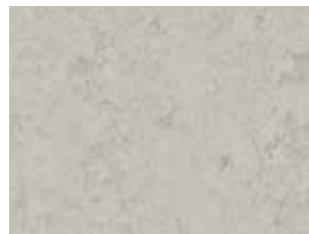
A heritage marble effect with vibrant colours for an authentic look.



Platinum 684

Style Emme

Combining tone on tone with a subtle marble pattern to fashion a modern classic that has a timeless quality.



Koala 794

Style Elle

A creative, dynamic pattern featuring directional linear design.



Ferro 305

Etrusco

A modern, minimalist feel incorporating plain shades that can create blocks of colour.



Shark 004

Trentino

Creativity and vibrancy from a multicolour pattern with a lively, semi-directional design.



Cloud 505

The new Originale collection

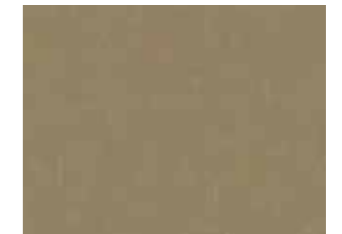
The only linoleum Cradle to Cradle Certified™ Gold, Originale embodies the essence of Tarkett linoleum: authentic, design-focused and sustainable.

Inspired by the natural purity of our **100% Linen** design, Originale fuses delicately distinctive patterns with soft colours made from the finest pigments. The unique palette of tone on tone shades takes its cue from nature. Elegant, contemporary and timeless.

Originale C2C Certified™ Gold is treated with *Essenza**, our non-PU acrylic surface protection. Originale is also available with xf² surface protection and is then C2C Certified™ Silver.



100% Linen



400

Lichen

495

LinoWall

The only linoleum approved for use on walls and featuring Bs2-d0 fire certification.

Conceived for architects, this completely new collection majors on creativity and versatility.

A palette of 10 colours and simple patterns, all designed to coordinate with Etrusco floors.

LinoWall comes with our exclusive xf²™ surface treatment and is Cradle to Cradle Certified™ Silver.



Honey

112

TARKETT LINO OVERVIEW

Compact

2mm xf ²	2	Veneto	14171
2.5mm xf ²	2.5	Etrusco	14177
	2.5	Originale	14142
	2.5	Style Elle	14225
	2.5	Style Emme	14235
	2.5	Trentino	14602
	2.5	Veneto	14172
2.5mm Essenza ⁺	E	Originale	14042
	E	Veneto	1805
3.2mm xf ²	3.2	Veneto	14173

Acoustic

3.8mm xf ²	S	Originale Silencio	14232
	S	Style Elle Silencio	14683
	S	Style Emme Silencio	14682
	S	Veneto Silencio	14792
4.4mm xf ²	AC	Veneto Acoustic Cork ⁺	14881

Technical solutions

2.5mm xf ²	C	Linoleum Conductive	14992
	SD	Linoleum Static Dissipative	14994
	R10	Veneto Sicuro ⁺	1863
	B _{fl}	Etrusco B _{fl} ⁺	14078
	B _{fl}	Originale B _{fl} ⁺	14138
	B _{fl}	Style Elle B _{fl} ⁺	14098
	B _{fl}	Style Emme B _{fl} ⁺	14088
	B _{fl}	Trentino B _{fl} ⁺	14128
	B _{fl}	Veneto B _{fl} ⁺	14898

Linoleum Wall

2mm xf ²	LinoWall 2m width	14110
	LinoWall 1m width ⁺	14011

--- Colour code ⁺ On request

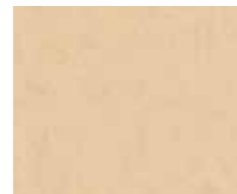


Originale



Pearl

401
NCS S1010-Y30R



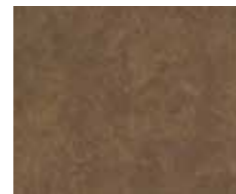
Raffia

408
NCS S1515-Y30R



100% linen

400
NCS S4020-Y30R



Clay

431
NCS S6010-Y30R



Blossom

435
NCS S6010-Y30R



Hematite

440
NCS S4040-Y70R



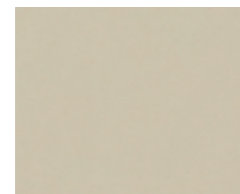
Sienna

434
NCS S4050-Y30R



Ochre

428
NCS S3040-Y30R



Foam

402
NCS S2502-Y



Cliff

485
NCS S5000-N



Cornflower

460
NCS S4010-B70G



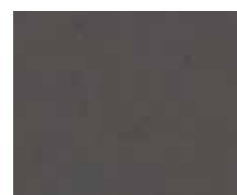
Lichen

495
NCS S4010-G90Y



Pepper

473
NCS S6005-Y80R



Granite

486
NCS S7000-N



Basalt

430
NCS S7010-G90Y



Carbon

409
NCS S7502-G



- ✓ The only linoleum Cradle to Cradle Certified™ Gold, Originale embodies the essence of Tarkett linoleum: authentic, design-focused and sustainable.
- ✓ Inspired by the natural purity of our **100% Linen** design, Originale fuses delicately distinctive patterns with soft colours made from the finest pigments.
- ✓ The unique palette of tone on tone shades takes its cue from nature. Elegant, contemporary and timeless.
- ✓ Originale C2C Certified™ Gold is treated with Essenza®, our non-PU acrylic surface protection. Originale is also available with xf2 surface protection and is then C2C Certified™ Silver.



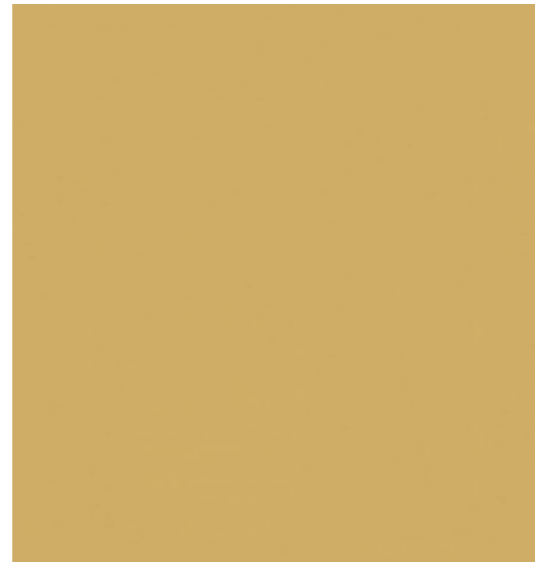
LinoWall



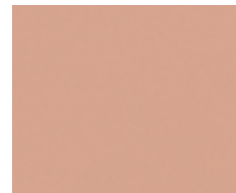
Cotton
122
NCS S2010-Y20R



Kraft
132
NCS S4030-Y30R



Honey
112
NCS S2040-Y20R



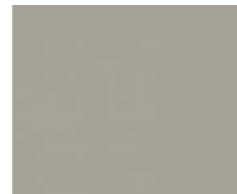
Candy
135
NCS S2030-Y80R



Ginger
138
NCS S4040-Y50R



Denim
170
NCS S4020-B



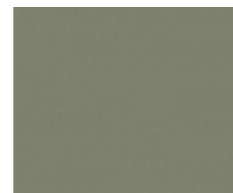
Metal
101
NCS S3502-Y



Silver
103
NCS S4502-B



Olive
155
NCS S3020-G30Y



Crocodile
191
NCS S5010-G30Y



- ✓ The only linoleum approved for use on walls and featuring Bs2-d0 fire certification.
- ✓ Conceived for architects, this completely new collection majors on creativity and versatility.
- ✓ A palette of 10 colours and simple patterns, all designed to coordinate with Etrusco floors.
- ✓ LinoWall comes with our exclusive xf²™ surface treatment and is Cradle to Cradle Certified™ Silver.



Linoleum xf²



Veneto
Absinthe

695
NCS S3040-G80Y



Style Emme
Pear

753
NCS S3030-G50Y



Trentino
Salt

501
NCS S3005-G20Y



Veneto
Apple green

754
NCS S2050-G40Y



Style Emme
Pistachio

758
NCS S3010-G20Y



Style Emme
Carolina

760
NCS S2010-G



Style Emme
Sapphire

763
NCS S2030-B30G



Veneto
Zinc★

671
NCS S4502-Y



Veneto
Horizon★

663
NCS S4010-R90B



Etrusco
Basil

056
NCS S4030-B90G



Style Emme
Mojito

755
NCS S2030-G50Y



Etrusco
Olive

055
NCS S3020-G30Y



Originale
Lichen

495
NCS S4010-G90Y



Originale
Cornflower

460
NCS S4010-B70G



Veneto
Periwinkle

761
NCS S3030-B10G



Style Emme
Ice

765
NCS S4020-B10G



Veneto
Ocean

665
NCS S5030-R90B



Style Emme
Jade

797
NCS S5020-G



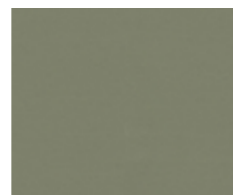
Style Emme
Pine

796
NCS S5030-G30Y



Veneto
Khaki

757
NCS S5010-G70Y



Etrusco
Crocodile

091
NCS S5010-G30Y



Etrusco
Petrol

067
NCS S5030-B10G



Style Emme
Prussian

766
NCS S6020-B



Veneto
Midnight

768
NCS S7020-R70B



Veneto
Navy

688
NCS S6030-R80B

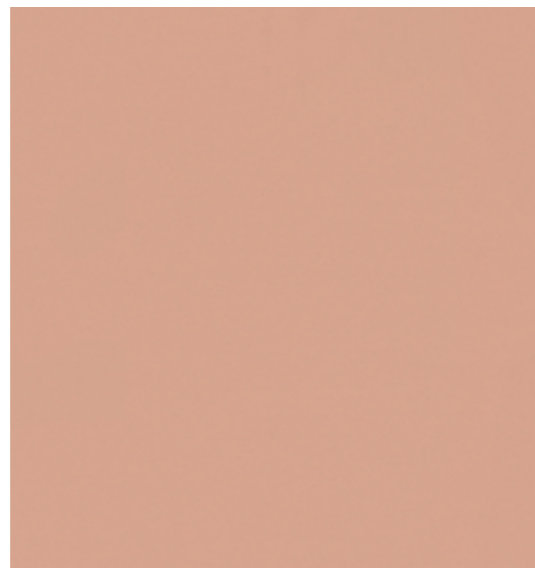
★ **Grands Classiques**

A selection of timeless colours guaranteed in production until 2033

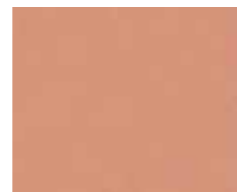
Linoleum xf²



**Style Emme
Nude**
723
NCS S1515-Y70R



**Etrusco
Candy**
035
NCS S2030-Y80R



**Originale
Blossom**
435
NCS S3020-Y70R



**Veneto
Camel★**
616
NCS S1020-Y30R



**Veneto
Eggshell**
619
NCS S1020-Y20R



**Veneto
Ecrú★**
711
NCS S2010-Y20R



**Originale
Pearl**
401
NCS S 1010-Y30R



**Etrusco
Blush**
034
NCS S3040-Y80R



**Veneto
Amber★**
636
NCS S2050-Y40R



**Veneto
Copper**
634
NCS S2040-Y40R



**Veneto
Cork★**
679
NCS S2020-Y20R



**Style Emme
Tan**
719
NCS S2020-Y20R



**Originale
Raffia**
408
NCS S1515-Y30R



**Style Emme
Strawberry**
741
NCS S3040-Y90R



**Veneto
Carmine**
645
NCS S1580-Y90R



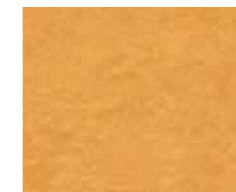
**Veneto
Terracotta★**
641
NCS S2070-Y80R



**Style Emme
Fox**
734
NCS S3040-Y50R



**Etrusco
Ginger**
038
NCS S4040-Y50R



**Veneto
Sunflower**
628
NCS S1070-Y20R



**Veneto
Corn★**
612
NCS S2040-Y10R



**Style Emme
Gold**
728
NCS S2040-Y20R



**Veneto
Crimson**
740
NCS S3060-R



**Style Emme
Berry**
743
NCS S5030-R



**Veneto
Raspberry**
945
NCS S4040-Y90R



**Originale
Hematite**
440
NCS S4040-Y70R



**Originale
Sienna**
434
NCS S4050-Y30R



**Originale
Ochre**
428
NCS S3040-Y30R



**Etrusco
Honey**
012
NCS S2040-Y20R



**Style Emme
Cinnamon**
731
NCS S5020-Y50R

★ Grands Classiques
A selection of timeless colours guaranteed in production until 2033

Linoleum xf²



Veneto Sisal★
611
NCS S2020-Y20R



Style Elle Palladino
390
NCS S2010-Y30R



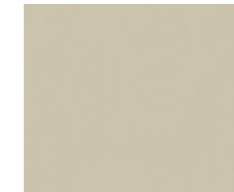
Etrusco Cotton
022
NCS S2010-Y20R



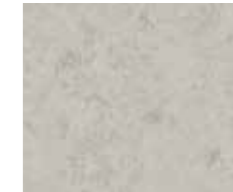
Veneto Burlap
911
NCS S2005-Y40R



Veneto Ivory
601
NCS S2005-Y10R



Originale Foam
402
NCS S2502-Y



Style Emme Koala
794
NCS S2502-Y



Style Elle Sabbia
308
NCS S1515-Y30R



Veneto Silk
625
NCS S3010-Y30R



Style Emme Cenere
201
NCS S3005 Y20R



Veneto Storm★
702
NCS S3502-Y



Veneto Fog
703
NCS S4502-Y



Style Emme Cemento
202
NCS S3502-Y



Veneto 100% linen
400
NCS S4020-Y30R



Etrusco Kraft
032
NCS S4030-Y30R



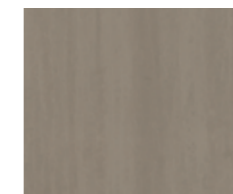
Style Emme Tobacco
730
NCS S4010-Y50R



Veneto Taupe dark
714
NCS S4005-Y20R



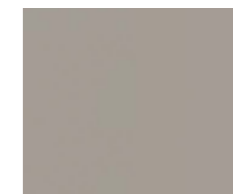
Style Emme Velluto
203
NCS S5005-Y20R



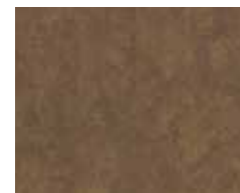
Style Elle Velluto
303
NCS S5005-Y20R



Originale Cliff
485
NCS S5000-N



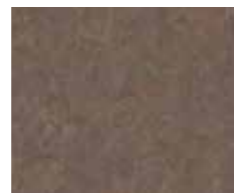
Etrusco Shark
004
NCS S4502-Y



Originale Clay
431
NCS S6010-Y30R



Style Elle Chestnut
451
NCS S6010-Y30R



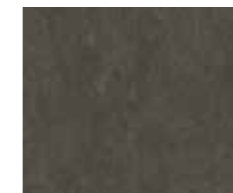
Style Emme Cedar
732
NCS S6010-Y50R



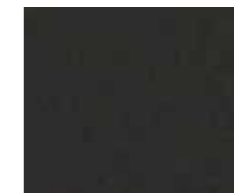
Originale Pepper
473
NCS S6005-Y80R



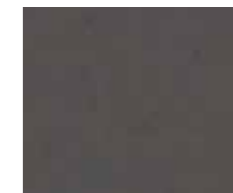
Style Elle Nutmeg
450
NCS S7010-G90Y



Originale Basalt
430
NCS S7010-G90Y



Originale Carbon
409
NCS S7502-G



Originale Granite
486
NCS S7000-N

Linoleum xf²



Veneto Grey★
793
NCS S2502-Y



Veneto Platinum
684
NCS S2502-Y



Veneto Pewter
685
NCS S4000-N



Trentino Cloud
505
NCS S5502-B



Etrusco Metal
001
NCS S3502-Y



Veneto Aluminium★
672
NCS S4502-G



Style Emme Ferro
205
NCS S5502-Y



Veneto Pebble★
604
NCS S5502-Y



Etrusco Silver
003
NCS S4502-B



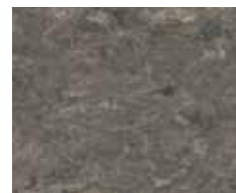
Veneto Steel★
673
NCS S6000-N



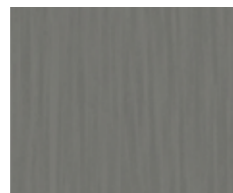
Veneto Stone
692
NCS S6502-G



Veneto Graphite★
906
NCS S7500-N



Veneto Smoke★
608
NCS S6502-Y



Style Elle Ferro
305
NCS S5502 Y



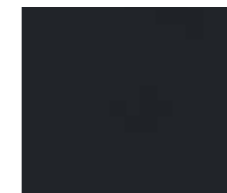
Trentino Grey pepper
503
NCS S6500-N



Veneto Concrete
686
NCS S6005-R80B



Veneto Slate★
674
NCS S8502-B



Etrusco Black
098
NCS S8502-B

MODERN SUSTAINABILITY

Modern sustainable choice for people and the environment

Tarkett Lino has been made the same way since 1898 and yet it continues to be a modern, versatile and sustainable form of flooring, made of natural, renewable materials like linseed oil, pine rosin, wood and cork flour and jute. Our Cradle to Cradle Certified™ approach ensures we design our products to positively contribute to the environment and people's well-being at each step of the product's life, while supporting the transition to a circular economy.

As a result, **our 2.5mm Tarkett Lino is carbon-negative from 'cradle to gate'**, including raw material extraction, transport and linoleum production.*

Use of recycled materials, our ReStart® take-back and recycling programme and environmental credentials contribute towards green-building certifications such as BREEAM, LEED, WELL and HQE.



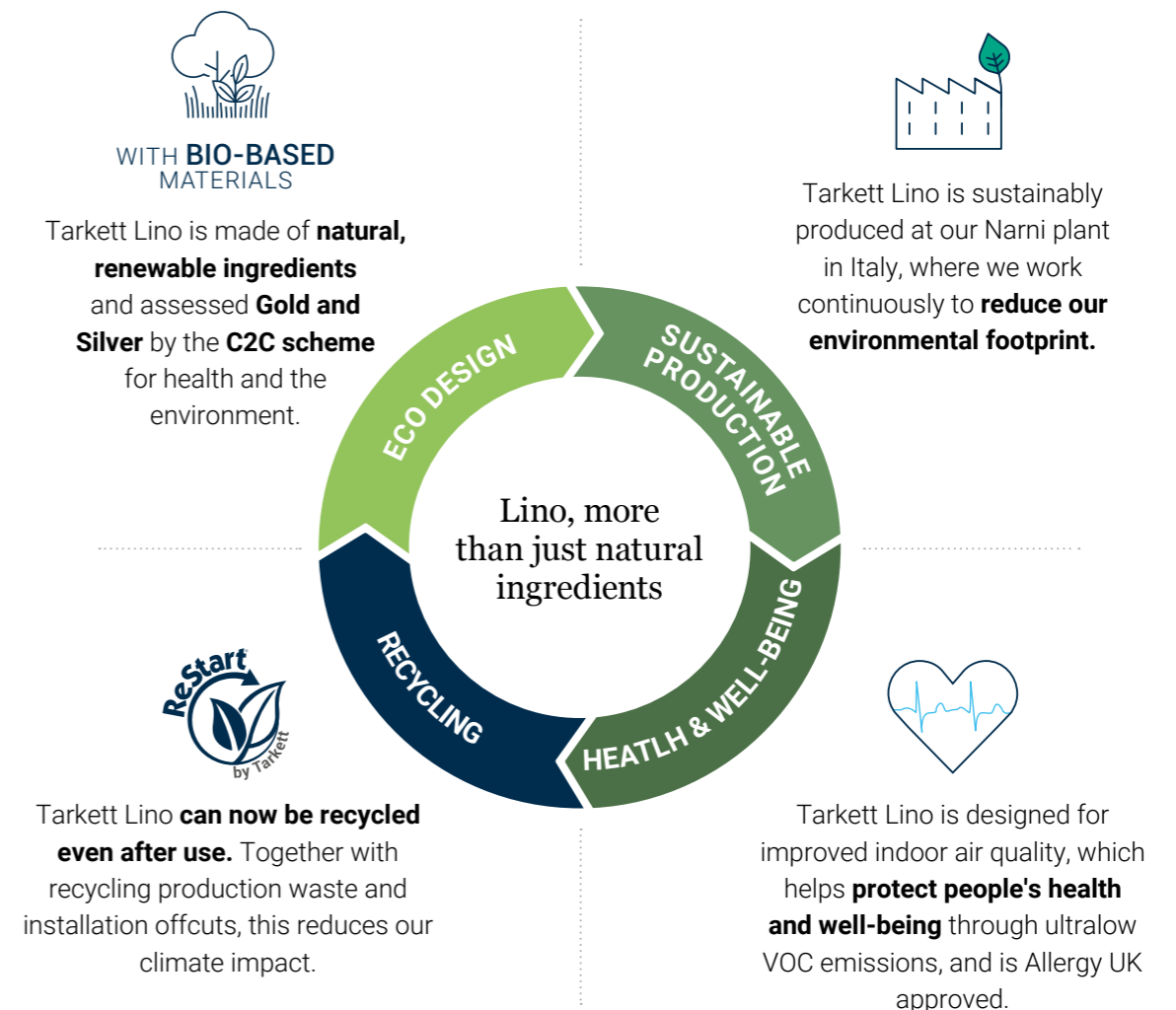
Cradle to Cradle Certified™ is the world's most advanced science-based, multi-attribute certification program for designing, making and verifying materials and products that are safe, circular and responsibly made.

Cradle to Cradle Certified™ products are awarded certification based upon their performance across five critical areas of sustainability: Material Health, Product Circularity, Clean Air & Climate Protection, Water & Soil Stewardship, and Social Fairness.

Our Originale Essenza+ Collection is the the only Cradle to Cradle Certified™ Gold linoleum on the market and offers the best sustainable credentials in our Lino range.

*EPD N°4789356590.101.1

Lino is a durable product manufactured in a green factory from carefully selected natural materials. It is also recyclable, even post-use now, into new raw materials to produce new floorings. As a result, our 2.5mm Tarkett Lino has the smallest environmental footprint in its category throughout its lifecycle*.





Eco design

In making linoleum, we use materials that contribute positively to people's health and the environment. The closed-loop system starts here, so that good materials become future resources that can be reused:

- Our Originale and Veneto Essenza+ 100% linen are **C2C Certified™ Gold** (the only linoleum to achieve this level). The rest of the collection is C2C Silver Certified™.

76% of bio-sourced materials.

Up to **97%** natural raw materials - linseed oil, pine rosin, wood and cork flour, calcium carbonate and jute.

Up to **77%** from abundant renewable resources - including local suppliers.

100% of ingredients have been positively assessed according to the **Cradle to Cradle Certified™** scheme for health and the environment.

100% recyclable - Tarkett Lino can be recycled into raw materials for future products or packaging.

30 years Lino is a durable product with a lifespan of up to 30 years, as stated in its Environmental Product Declaration*.



Sustainable production

Our world-class manufacturing programme drives us to continuously improve our processes, enabling us to reduce our operational impact and preserve the environment.

100% renewable electricity.

100% recycled / recirculated industrial water in a closed-loop system. Rainwater is also collected and re-used.

34% of our energy is self-generated. We produce power from a trigeneration system to increase energy efficiency in an economic, sustainable way. We also use photovoltaic panels, a biomass boiler and a geothermal energy system.

0% production waste goes to landfill.

60% reduction in our greenhouse-gas emissions vs 2010 (equivalent to driving a car 1000 times around the world).

- Pioneering the SA 8000 Social Accountability and ISO 37001 Anti-Bribery Management Systems, in addition to existing ISO9001 quality, ISO14001 environment, ISO50001 energy and ISO 45001 Occupational Health and Safety Management Systems.



Recycling

That way, it can be turned into new products and positively impact our carbon footprint.

- Our dedicated **ReStart® take-back and recycling programme** offers: post-installation and **now post-use recycling**.
- Tarkett Lino is **100% recyclable**.
- **By recycling 750 tons of linoleum annually, we reduce our impact on climate change:** total greenhouse-gas savings of 7.1kg of CO₂ eq/sqm (installation waste recycling) and 5.4kg of CO₂ eq/sqm (post-use waste recycling).
- **Recycled materials** such as linoleum powder, cork and wood flour **make up 36%** of Tarkett Lino's composition, helping to reduce raw-material inputs.



Health & well-being

We create flooring designed for improved indoor air quality, which helps to protect people's health and well-being.

- **Optimal indoor air quality with all our floor- and wall coverings:** ultra low VOC emissions ($\leq 10\mu\text{g}/\text{m}^3$) 100 times lower than the most stringent industry requirements.
- **Naturally phthalate-free.**
- **Naturally inhibiting bacterial growth.** Tarkett Lino has naturally anti-bacterial properties against the most common bacteria, such as E-coli and MRSA.
- **Approved by Allergy UK: Allergy UK's assessment** proved that, if cleaned and maintained as recommended, Tarkett Lino helps with the removal of allergens such as house dust mites, pollen, cat and dog hair, mould and fungi.
- **We offer solutions for insulation and sound-proofing**, reducing energy loss and noise pollution.

Providing transparent information

For our Lifecycle Assessment we work with our main partners and relevant authorities, focusing on:

- **Responsible sourcing:** all our suppliers must meet quality, cost, environmental and social- accountability criteria.
- **ReStart® take-back and recycling programme:** our Narni plant in Italy aims to increase the proportion of post-installation, and now post-use, waste that it recycles.

* Based on an installation performed by a professional installer, trained by Tarkett and following the Lino specifications.



MODERN PERFORMANCE

A hard-wearing solution over its lifetime

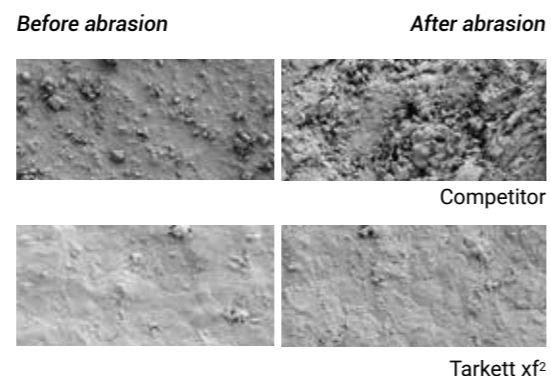
For 150 years, linoleum flooring has been appreciated for its natural beauty, comfort, durability and versatility in most interior environments. Tarkett was an early innovator in surface treatments, with the xf² technology added to its linoleum, to improve resistance and simplify maintenance for significant cost savings in daily cleaning and care.

xf² for excellent performance

- Micro-reinforced polyurethane UV treatment seals and hardens the surface to make it more resistant to dirt, daily wear and tear.
- No need for polish, stripping and polymer waxing over the lifetime of the surface*.

Superior resistance to abrasion and chemicals

This protective layer can be affected during use (by traffic), which we simulated with an abrasion test. The results show that a typical competitor's product is damaged after abrasion, while **Tarkett xf² is still intact and resistant to chemicals.**



NEW improved xf² welding rods

Our new welding rods are easier to install and offer excellent resistance to all kinds of soiling and abrasion for more effective cleaning.

Simplifying cleaning and maintenance

xf² Linoleum's reinforced surface treatment makes polish, stripping and polymer waxing unnecessary over the product's lifetime*. This means cleaning and maintenance become less frequent and less intense, reducing the use of water, energy and detergents for a smaller environmental footprint.

Naturally inhibiting bacterial growth

Tarkett Lino has naturally anti-bacterial properties against the most common bacteria, such as E-coli and MRSA.

xf² Linoleum's lower lifecycle cost

The initial investment and installation charges normally account for just a small proportion of a flooring's total lifecycle cost. The rest is cleaning and maintenance. As xf² Linoleum requires no surface treatment after installation and no wax or polish over its lifetime, the total lifecycle cost is significantly lower. Compared with other treated linoleum flooring, payback on the extra investment can be achieved within two years.

For more information, please contact your Tarkett representative.

* Provided soil barriers are correctly put in place, regular maintenance is carried out, furniture legs have appropriate coverings and daily inspections are performed.

CLEANING & MAINTENANCE

xf² cleaning and maintenance: no polish, no wax*

Modern cleaning protocols aim to reduce the amount of wet cleaning, replacing it with drier cleaning techniques, like the use of centrally laundered, pre-impregnated mops and more efficient machinery. This makes work easier and more effective for cleaning staff. It also reduces the environmental impact, with less need for fresh water or detergents.

Initial site cleaning



After installation, the site must be vacuum-cleaned, swept or damp-mopped to remove building dust and loose dirt. A combined scrubber/dryer with brushes or red pads cleans large areas very effectively. Use detergent with a low pH (3-5). xf²'s surface treatment will easily withstand this kind of cleaning.

Daily and regular cleaning



Remove dust and dirt with dry or pre-impregnated yarn, microfibre or disposable mops. Alternatively, use a vacuum cleaner. Marks can be wiped off by a damp mop, either with water or a detergent solution. Ensure the floor is dry of water or fluid within 15-20 seconds of cleaning. If necessary, spray clean using a rotary cleaner equipped with red pads.

Sharp-edged or poorly maintained furniture feet, sand, pebbles and repeated movements over a specific area will damage any type of flooring over time.

Periodic cleaning



Combined machine: use diluted neutral detergent. Speed low 150-250 rpm or higher. Red/brown pads are usually most suitable.

or

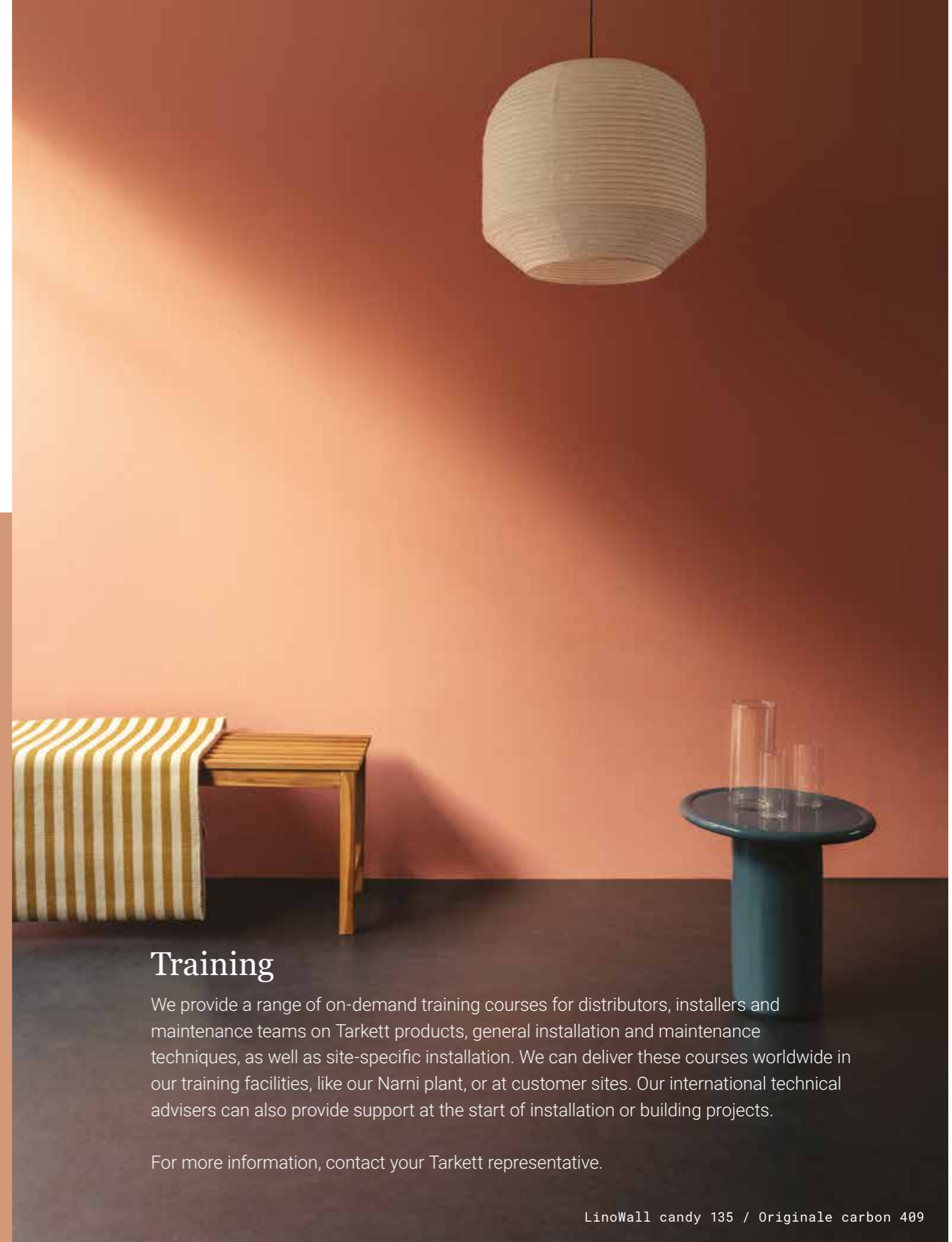


Machine scrubbing + wet vacuuming

- Apply a cleaning solution (fairly strong, pH 10-11, after dilution) and leave to act for 5-10 mins.
 - Clean the floor using a heavy-duty single disc scrubbing machine (red pad).
- Vacuum up the dirty water immediately.
- Rinse with clean water and allow the floor to dry.

Essenza⁺ surface protection requires specific cleaning and maintenance procedures. Please check our website.

* Provided that soil barriers are correctly put in place, regular maintenance is carried out, furniture legs have appropriate coverings and daily inspections are performed.



Training

We provide a range of on-demand training courses for distributors, installers and maintenance teams on Tarkett products, general installation and maintenance techniques, as well as site-specific installation. We can deliver these courses worldwide in our training facilities, like our Narni plant, or at customer sites. Our international technical advisers can also provide support at the start of installation or building projects.

For more information, contact your Tarkett representative.

LinoWall candy 135 / Originale carbon 409

VERSATILE USE



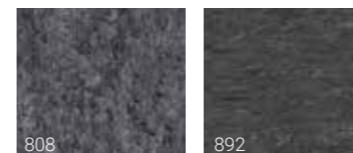
Natural yellowing effect

Once unpacked and as a result of the natural production process, linoleum sometimes comes with a slightly yellow surface film. The yellow tint will disappear progressively within 24 hours of exposure to sunlight. The phenomenon is reversible and the yellow film might reappear in areas covered by furniture or other objects. It will of course disappear again once exposed to daylight.

Originale Ochre 428 / LinoWall Honey 112

SD Static Dissipative xf²

A safe, sustainable flooring designed for static control near computer, electronic and telecommunications equipment in medical, manufacturing, education and industry environments. Available in rolls and pre-cuts for raised floors.



Veneto Sicuro xf²

Slip-resistance - R10 rating - 2.5mm
R10 Slip-resistance rating: combines secure grip with xf²'s ease of cleaning. Ideal for building entrances. Product available on demand, in rolls and 608 x 608 mm pre-cuts for raised floors, in all Veneto colours.

Linoleum Bfl 2.5mm xf²

Flame-retardant solution
2.5mm linoleum featuring Bfl fire rating without flame retardants. The Bfl rating is achieved by natural component materials. Ideal for evacuation routes. Product available on demand in rolls and 608 x 608 mm pre-cuts for raised floors, in all designs and colours.

Conductive xf²

The only conductive linoleum
A safe and sustainable flooring designed for stable and reliable conductive control. The natural solution for education, healthcare and office environments, especially for areas like server and computer rooms, laboratories and around electronic equipment. Available in rolls and pre-cuts for raised floors.

Silencio xf²

Acoustic solution - 19dB - 3.8mm
2.5mm linoleum with jute backing and recycled polyurethane foam underlayer, giving an excellent sound reduction of 19dB. Available in rolls and pre-cuts for raised floors.

Veneto Acoustic Cork xf²

Acoustic solution - 15dB - 4.4mm
2.5mm linoleum with natural Elafono (cork underlayer) giving excellent sound reduction of 15dB. Product available on demand, in rolls in all Veneto colours.

Elafono

Acoustic solution - up to 15dB
2.0mm traditional, natural, 100% corkment underlay installed in combination with any compact Tarkett linoleum for added sound reduction (up to 15dB, depending on the product). Available in rolls.

Essenza⁺

2.5mm
The traditional non-PU, factory applied finish, ready to walk on, with improved durability. Available in rolls.

Pre-cuts for raised floors

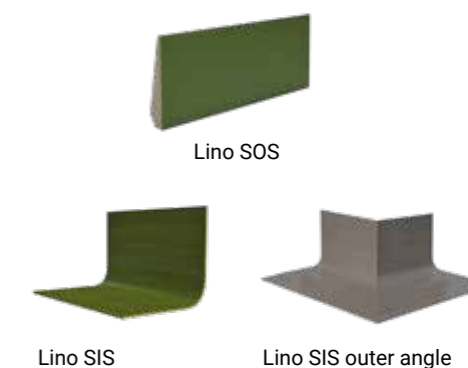
608 x 608 mm
Linoleum pre-cuts ready for use. Designed for raised floors, they are available on request in all compact and acoustic xf² colours and designs.

Sport and rail application

Tarkett Lino is also suitable for sport and rail application. Check our website.

Accessories

Linoleum set-on skirtings (SOS) and Linoleum set-in skirtings (SIS)
Available in several options.



HERITAGE

The Tarkett Lino plant celebrates its 124th anniversary in 2022.



The Tarkett linoleum plant at Narni (Italy), easily recognisable by its distinctively shaped ovens building, began producing linoleum at the end of the 19th century. The plant represented one of the region's earliest industries, shaping the development of Narni and the surrounding area.



Traditional flooring made in Italy

One of Italy's smallest regions, Umbria lies directly in the centre of Italy. The Tarkett linoleum plant started production in Narni in the late 19th century, when European countries commonly used linoleum for flooring and wall-coverings. By the 1920s, there were around 100 sites making linoleum. In the early 1990s, Tarkett began modernising the entire production process. Today, Narni is accredited ISO 9001 Quality System and holds important environmental certifications including ISO 14001, ISO 50001, ISO 45001 Occupational Health and Safety Management Systems SA 8000 Social Accountability, ISO 37001 Anti-Bribery Management Systems, the Nordic Swan Ecolabel and Der Blaue Engel.

Tarkett is a global player, exporting more than 90% of its linoleum across the world.

Tradition and innovation

Mindful of the environment, we have innovated and improved our manufacturing practices to reduce our operational impact. As a result, Tarkett Lino is a flooring solution that blends craftsmanship with the most advanced technology.

Range overview

Discover the full Tarkett Lino range

Colour name	Colour reference	Veneto xf² 2.0mm	Veneto xf² 2.5mm	Veneto xf² 3.2mm	Veneto Silencio xf² 3.8mm	Veneto Essenza* 2.5mm	Veneto xf² Br 2.5mm ON REQUEST	Veneto Acoustic Cork xf² 1.5dB 4.4mm ON REQUEST	Veneto Sicuro xf² R10 2.5mm ON REQUEST	NCS code LINOLEUM	Uni Color Welding Rod 4mm	NCS code Uni Color Welding Rod	Multi Color Welding Rod 4mm	NCS code Multi Color Welding Rod	LRV	
															L	LRV of a surface**
100% linen	400		14172400	14173400	14792400	1805400	14898400	14881400	1863400	S4020-Y30R	14009400	S4020-Y30R			59,18	27%
ivory	601		14172601			1805601	14898601	14881601	1863601	S2005-Y10R	14009601	S2010-Y10R			74,8	48%
*pebble	604	14171604	14172604		14792604	1805604	14898604	14881604	1863604	S5502-Y	14009205	S6005-G80Y	14002604	S5502-Y	50,3	19%
*smoke	608	14171608	14172608		14792608	1805608	14898608	14881608	1863608	S6502-Y	14009608	S6005-G80Y	14002608	S6502-Y	45,7	15%
*sisal	611	14171611	14172611	14173611		1805611	14898611	14881611	1863611	S2020-Y20R	14009611	S2020-Y30R	14002611	S2020-Y20R	70,3	41%
*corn	612		14172612			1805612	14898612	14881612	1863612	S2040-Y10R	14009219	S2050-Y	14002612	S2040-Y10R	73,8	46%
*camel	616		14172616			1805616	14898616	14881616	1863616	S1020-Y30R	14009631	S3020-Y30R	14002616	S1020-Y30R	71,2	42%
eggshell	619		14172619			1805619	14898619	14881619	1863619	S1020-Y20R	14009619	S2020-Y10R			76,8	51%
silk	625	14171625	14172625				14898625	14881625	1863625	S3010-Y30R	14009625	S3010-Y			62,7	31%
sunflower	628		14172628	14173628	14792628	1805628	14898628	14881628	1863628	S1070-Y20R	14009628	S2060-Y30R			67,3	37%
copper	634		14172634				14898634	14881634	1863634	S2040-Y40R	14009634	S2060-Y30R			63,3	32%
*amber	636		14172636	14173636		1805636	14898636	14881636	1863636	S2050-Y40R	14009636	S2060-Y30R	14002636	S2050-Y40R	58,35	26%
*terracotta	641		14172641	14173641		1805641	14898641	14881641	1863641	S2070-Y80R	14009641	S3060-Y70R	14002641	S2070-Y80R	45,04	15%
carmine	645		14172645	14173645			14898645	14881645	1863645	S1580-Y90R	14009645	S2070-Y90R			42	13%
*horizon	663	14171663	14172663	14173663		1805663	14898663	14881663	1863663	S4010-R90B	14009660	S4005-R80B	14002663	S4010-R90B	59,73	28%
ocean	665		14172665			1805665	14898665	14881665	1863665	S5030-R90B	14009665	S5030-R90B			45,1	15%
lavender	670		14172670	14173670		1805670	14898670	14881670	1863670	S4020-R90B	14009670	S4020-R80B			50,96	19%
*zinc	671	14171671	14172671		14792671	1805671	14898671	14881671	1863671	S4502-Y	14009671	S4502-G	14002671	S4502-Y	61,06	29%
*aluminium	672	14171672	14172672	14173672		1805672	14898672	14881672	1863672	S4502-G	14009672	S4502-G	14002672	S4502-G	57,74	26%
*steel	673	14171673	14172673	14173673		1805673	14898673	14881673	1863673	S6000-N	14009673	S6005-B20G	14002673	S6000-N	50,2	19%
*slate	674		14172674	14173674	14792674	1805674	14898674	14881674	1863674	S8502-B	14009098	S8502-B	14002674	S8502-B	29,84	6%
*cork	679	14171679	14172679			1805679	14898679	14881679	1863679	S2020-Y20R	14009611	2020-Y30R	14002679	S2020-Y20R	69,52	40%
platinum	684		14172684		14792684		14898684	14881684	1863684	S2502-Y	14009793	S3005-G80Y			70,18	41%
pewter	685		14172685		14792685		14898685	14881685	1863685	S4000-N	14009685	S3502-B			62,63	31%
concrete	686		14172686		14792686		14898686	14881686	1863686	S6005-R80B	14009686	S6005-B20G			44,8	14%
navy	688		14172688	14173688		1805688	14898688	14881688	1863688	S6030-R80B	14009220	S7020-R90B			30,26	6%
stone	692		14172692		14792692	1805692	14898692	14881692	1863692	S6502-G	14009692	S5502-G			45,72	15%
absinthe	695		14172695	14173695	14792695	1805695	14898695	14881695	1863695	S3040-G80Y	14009695	S2050-G60Y			62,65	31%
*storm	702	14171702	14172702		14792702	1805702	14898702	14881702	1863702	S3502-Y	14009202	S4502-Y	14002702	S3502-Y	61	29%
fog	703	14171703	14172703		14792703		14898703	14881703	1863703	S4502-Y	14009703	S4502-Y			61,14	29%
*ecru	711	14171711	14172711			1805711	14898711	14881711	1863711	S2010-Y20R	14009611	S2020-Y30R	14002711	S2010-Y20R	73,19	45%
taupe dark	714		14172714				14898714	14881714	1863714	S4005-Y20R	14009303	S5005-Y20R			60,31	28%
crimson	740		14172740				14898740	14881740	1863740	S3060-R	14009740	S3060-R			39,23	11%
apple green	754		14172754			1805754	14898754	14881754	1863754	S2050-G40Y	14009754	S3040-G40Y			63,54	32%
khaki	757		14172757			1805757	14898757	14881757	1863757	S5010-G70Y	14009495	S5010-G90Y			55,38	23%
periwinkle	761		14172761	14173761			14898761	14881761	1863761	S3030-B10G	14009761	S4030B-30G			49,52	18%
midnight	768		14172768				14898768	14881768	1863768	7020-R70B	14009220	S7020-R90B			35,35	9%
*grey	793	14171793	14172793	14173793		1805793	14898793	14881793	1863793	S2502-Y	14009793	S3005-G80Y	14002793	S2502-Y	67,91	38%
*graphite	906	14171906	14172906		14792906	1805906	14898906	14881906	1863906	S7500-N	14009906	S6005-B20G	14002906	S7500-N	37,61	10%
burialap	911	14171911	14172911				14898911	14881911	1863911	S2005-Y40R	14009625	S3040-Y20R			72,69	45%
raspberry	945		14172945			1805945	14898945	14881945	1863945	S4040-Y90R	14009945	S4040-Y80R			40,52	12%

*Grands Classiques. **LRV of a surface = p-value (rho) ρ=100 x ((L+16)/116)³

Colour name	Colour reference	Etrusco xf² 2.5mm	Etrusco Br xf² 2.5mm ON REQUEST	NCS code LINOLEUM	Uni Color Welding Rod 4mm	NCS code Uni Color Welding Rod	LRV	
							L	LRV of a surface**
metal	001	14177001	14078001	S3502-Y	14009793	S3005-G80Y	67,47	37%
silver	003	14177003	14078003	S4502-B	14009692	S5502-G	54,85	23%
shark	004	14177004	14078004	S4502-Y	14009703	S4502-Y	61,54	30%
honey	012	14177012	14078012	S2040-Y20R	14009012	S2050-Y20R	68,6	39%
cotton	022	14177022	14078022	S2010-Y20R	14009700	S2010-Y10R	76,17	50%
kraft	032	14177032	14078032	S4030-Y30R	14009032	S4020-Y40R	57,37	25%
blush	034	14177034	14078034	S3040-Y80R	14009034	S3050-Y80R	52,28	20%
candy	035	14177035	14078035	S2030-Y80R	14009435	S2020-Y60R	65,8	35%
ginger	038	14177038	14078038	S4040-Y50R	14009734	S3040-Y50R	51,51	20%
olive	055	14177055	14078055	S3020-G30Y	14009055	S3020-G40Y	66,78	36%
basil	056	14177056	14078056	S4030-B90G	14009056	S3040-B90G	54,51	22%
sky	062	14177062	14078062	S2040-B10G	14009062	S2040-B10G	67,58	37%
petrol	067	14177067	14078067	S5030-B10G	14009766	S6020-B	44,13	14%
denim	070	14177070	14078070	S4020-B	14009765	S4030-B	54,54	22%
crocodile	091	14177091	14078091	S5010-G30Y	14009091	S5010-G30Y	55,09	23%
black	098	14177098	14078098	S8502-B	14009098	S8502-B	26,6	5%

Colour name	Colour reference	Style Emme xf² 2.5mm	Style Emme Silencio xf² 3.8mm	Style Emme Br xf² 2.5mm ON REQUEST	NCS code LINOLEUM	Uni Color Welding Rod 4mm	NCS code Uni Color Welding Rod	LRV	
								L	LRV of a surface**
cenere	201	14235201		14088201	S3005-Y20R	14009201	S3010-Y20R	64,84	34%
cemento	202	14235202	14682202	14088202	S3502-Y	14009202	S4502-Y	58,25	26%
velluto	203	14235203		14088203	S5005-Y20R	14009303	S5005-Y20R	46,69	16%
ferro	205	14235205		14088205	S5502-Y	14009205	S6005-G80Y	42,86	13%
tan	719	14235719		14088719	S2020-Y20R	14009719	S2020-Y10R	76,36	50%
nude	723	14235723		14088723	S1515-Y70R	14009435	S3020-Y60R	77,65	53%
gold	728	14235728		14088728	S2040-Y20R	14009628	S2060-Y30R	72,2	44%
tobacco	730	14235730		14088730	S4010-Y50R	14009502	S5010-Y10R	56,54	24%
cinnamon	731	14235731		14088731	S5020-Y50R	14009731	S5030-Y30R	47,03	16%
cedar	732	14235732		14088732	S6010-Y50R	14009524	S7010-Y30R	49,18	18%
fox	734	14235734		14088734	S3040-Y50R	14009734	S3040-Y50R	57,75	26%
strawberry	741	14235741		14088741	S3040-Y90R	14009741	S3050-Y80R	51,83	20%
berry	743	14235743		14088743	S5030-R	14009743	S5040-R	38,45	10%
pear	753	14235753		14088753	S3030-G50Y	14009753	S3030-G60Y	63,62	32%
mojito	755	14235755		14088755	S2030-G50Y	14009754	S3040-G40Y	73,98	47%
pistachio	758	14235758		14088758	S3010-G20Y	14009758	S4020-B90G	66,17	36%
aqua	759	14235759		14088759	S3020-B60G	14009759	S3020-B70G	67,05	37%
carolina	760	14235760	14682760	14088760	S2010-G	14009760	S2010-B70G	72,6	45%
sapphire	763	14235763		14088763	S2030-B30G	14009763	S3020-B30G	69,47	40%
ice	765	14235765		14088765	S4020-B10G	14009765	S4030-B	54,77	23%
prussian	766	14235766	14682766	14088766	S6020-B	14009766	S6020-B	40,96	12%
koala	794	14235794		14088794	S2502-Y	14009793	S3005-G80Y	75,15	49%
pine	796	14235796	14682796	14088796	S5030-G30Y	14009796	S5020-G30Y	47,38	16%
jade	797	14235797		14088797	S5020-G	14009797	S5020-G	47,05	16%

Colour name	Colour reference	Style Elle xf² 2.5mm	Style Elle Silencio xf² 3.8mm	Style Elle Br xf² 2.5mm ON REQUEST	NCS code LINOLEUM	Uni Color Welding Rod 4mm (for compact linoleum) (14009)	NCS code Uni Color Welding Rod	LRV	
								L	LRV of a surface**
velluto	303	14225303	14683303	140983					

TRENTINO	Colour name	Colour reference	Trentino xf² 2.5mm	Trentino Br. xf² 2.5mm ON REQUEST	NCS code LINOLEUM	Uni Color Welding Rod 4mm	NCS code Uni Color Welding Rod	LRV	
								L	LRV of a surface**
	salt	501	14602501	14128501	S3005-G20Y	14009793	S3030-G40Y	66,67	36%
	grey pepper	503	14602503	14128503	S6500-N	14009207	S7005-G50Y	41,61	12%
	cloud	505	14602505	14128505	S5502-B	14009673	S6005-B20G	52,2	20%

ORIGINALE	Colour name	Colour reference	Originale Essenza* 2.5mm	Originale xf² 2.5mm	Originale Shades* 3.8mm ON REQUEST	BFI xf² 2.5mm ON REQUEST	NCS code LINOLEUM	Uni Color Welding Rod 4mm	NCS code Uni Color Welding Rod	LRV	
										L	LRV of a surface**
	100% linen	400	see Veneto	see Veneto		see Veneto	S 4020-Y30R	14009400	S4020-Y30R	59,18	27%
	pearl	401	14042401	14142401		14138401	S 1010-Y30R	14009700	S2010-Y10R	83,62	63%
	foam	402	14042402	14142402	14232402	14138402	S 2502-Y	14009002	S3010-G70Y	73,62	46%
	raffia	408	14042408	14142408		14138408	S 1515-Y30R	14009611	S2020-Y30R	78,26	54%
	carbon	409	14042409	14142409		14138409	S 7502-G	14009098	S8502-B	32,03	7%
	ochre	428	14042428	14142428		14138428	S 3040-Y30R	14009428	S 3040-Y20R	59,85	28%
	basalt	430	14042430	14142430		14138430	S 7010-G90Y	14009430	S6502-Y	36,24	9%
	clay	431	14042431	14142431		14138431	S 6010-Y30R	14009524	S7010-Y30R	42,38	13%
	sienna	434	14042434	14142434		14138434	S 4050-Y30R	14009434	S3050-Y50R	54,68	23%
	blossom	435	14042435	14142435		14138435	S 3020-Y70R	14009435	S3020-Y60R	64,48	33%
	hematite	440	14042440	14142440		14138440	S 4040-Y70R	14009945	S4040-Y80R	45,93	15%
	cornflower	460	14042460	14142460		14138460	S 4010-B70G	14009460	S4020-B50G	55,42	23%
	pepper	473	14042473	14142473	14232473	14138473	S 6005-Y80R	14009473	S6005-Y80R	46,69	16%
	cliff	485	14042485	14142485		14138485	S 5000-N	14009692	S5502-G	57,69	26%
	granite	486	14042486	14142486		14138486	S 7000-N	14009906	S6005-B20G	40,22	11%
	lichen	495	14042495	14142495		14138495	S 4010-G90Y	14009495	S5010-G90Y	56,75	25%

LINOWALL	Colour name	Colour reference	LinoWall xf² 2mm - 2m	LinoWall xf² 2mm - 1m ON REQUEST	NCS code LINOLEUM	Uni Color Welding Rod 4mm (14009)	NCS code Uni Color Welding Rod	LRV	
								L	LRV of a surface**
	metal	101	14110101	14011101	S3502-Y	14009793	S3005-G80Y	67,9	38%
	silver	103	14110103	14011103	S4502-B	14009692	S5502-G	54,85	23%
	honey	112	14110112	14011112	S2040-Y20R	14009012	S2050-Y20R	69,32	40%
	cotton	122	14110122	14011122	S2010-Y20R	14009700	S2010-Y10R	77,03	52%
	kraft	132	14110132	14011132	S4030-Y30R	14009032	S4020-Y40R	57,37	25%
	candy	135	14110135	14011135	S2030-Y80R	14009435	S3020-Y60R	65,8	35%
	ginger	138	14110138	14011138	S4040-Y50R	14009734	S3040-Y50R	51,51	20%
	olive	155	14110155	14011155	S3020-G30Y	14009055	S3020-G40Y	67,19	37%
	denim	170	14110170	14011170	S4020-B	14009765	S4030-B	54,54	22%
	crocodile	191	14110191	14011191	S5010-G30Y	14009091	S5010-G30Y	55,09	23%

**LRV of a surface = p-value (rho) $\rho=100 \times ((L+16)/116)^3$

STATIC DISSIPATIVE	Colour name	Colour reference	LinoLeum SD Static Dissipative xf² - 2.5mm	NCS code LINOLEUM	Uni Color Welding Rod 4mm	NCS code Uni Color Welding Rod	LRV	
							L	LRV of a surface**
	dark grey	808	14994808	S8000-N	14009098	S8502-B	45,05	15%
	plumb grey	892	14994892	S6502-G	14009692	S5502-G	35,9	9%

CONDUCTIVE	Colour name	Colour reference	LinoLeum Conductive xf² 2.5mm	NCS code LINOLEUM	Uni Color Welding Rod 4mm	NCS code Uni Color Welding Rod	LRV	
							L	LRV of a surface**
	dark grey	808	14992808	S8000-N	14009098	S8502-B	45,05	15%

UNDERLAYERS	Colour name	Colour reference
		ELAFONO

Latest references

For more references, check our website.



Erasmus Riedberg Day Care Centre
RIEDBERG, FRANKFURT, GERMANY
Style Emme Silencio xf²™ 19dB

Public High School
NORT-SUR-ERDRE, FRANCE
Architect: Céline Leduby of AIA Life Designers
Veneto xf²™ / Trentino xf²™ / Style Emme xf²™

Technical data

CERTIFICATION & CLASSIFICATION	STANDARDS	Veneto xf ² 2mm	Veneto xf ² , Style Emme xf ² , Style Elle xf ² , Etrusco xf ² , Trentino xf ² , Originale xf ² 2.5mm	Linoleum xf ² B _n 2.5mm ON REQUEST	Originale Essenza*, Veneto Essenza* 2.5mm
CE certification	EN 14041	Yes	Yes	Yes	Yes
Classification	EN ISO 10874: Domestic/ Commercial/Light industrial	Classes: 23/32/41	Classes: 23/34/43	Classes: 23/34/43	Classes: 23/34/43
TECHNICAL CHARACTERISTICS		STANDARDS			
Surface treatment		xf ²	xf ²	xf ²	Essenza*
Total thickness	EN ISO 24346	2.0 mm	2.5 mm	2.5 mm	2.5 mm
Total weight	EN ISO 23997	ca. 2 300 g/m ²	ca. 2 900 g/m ²	ca. 3 200 g/m ²	ca. 2 900 g/m ²
Residual indentation	EN ISO 24343-1 Standard requirements Average measured value	≤ 0.15 mm ca. 0.07 mm	≤ 0.15 mm ca. 0.08 mm	≤ 0.15 mm ca. 0.08 mm	≤ 0.15 mm ca. 0.08 mm
Flexibility	EN ISO 24344 Method A	≤ 25 mm Ø	≤ 30 mm Ø	≤ 30 mm Ø	≤ 30 mm Ø
Form of delivery	EN ISO 24341	≤ 32 x 2 m	≤ 32 x 2 m	≤ 16 x 2 m	≤ 32 x 2 m
TECHNICAL PERFORMANCES		STANDARDS			
Fire classification	EN 13501-1	C _{fl} -s1	C _{fl} -s1	B _{fl} -s1	C _{fl} -s1
Fire effluent toxicity	ISO 5659-2 (evaluation according to EN 45545-2 Annex C)	-	-	-	-
Impact sound reduction	EN ISO 10140-3 / EN ISO 717-2	5 dB	6 dB	5 dB	6 dB
Impact sound in the room	NF S31-074	Class C < 85 dB	Class C < 85 dB	Class C < 85 dB	Class C < 85 dB
Impact sound reduction with Elafono*	EN ISO 10140-3 EN ISO 717-2	14 dB	14 dB	14 dB	14 dB
Castor chair	EN ISO 4918	Suitable for office chairs with castors type W (Norm EN 12529)			
Static electrical propensity	EN 1815	< 2 kV	< 2 kV	< 2 kV	< 2 kV
Electrical resistance	EN 1081	-	-	-	-
	-	-	-	-	-
	ESD-approval SP method 2472	-	-	-	-
	EN/IEC 61340-4-1	-	-	-	-
Impact resistance	EN 259-2	-	-	-	-
Slip resistance	EN 13893 DIN 51130	DS: ≥ 0.30 R9	DS: ≥ 0.30 R9	DS: ≥ 0.30 R9	DS: ≥ 0.30 R9
Chemical resistance	EN ISO 26987	Resistant to dilute acids, oils, facts, current solvents and alkalis Resistant to dilute acids, oils, facts, current solvents and alkalis Resistant to sodium hypochlorite and hydrogen peroxide based disinfectants recommended by EPA/WHO			
Thermal resistance Underfloor heating	EN ISO 10456	0.17 W/(m ² K) Suitable	0.17 W/(m ² K) Suitable	0.17 W/(m ² K) Suitable	0.17 W/(m ² K) Suitable
Light fastness	EN ISO 105-B02	≥ 6	≥ 6	≥ 6	≥ 6
Spongeability, washability and extra washability	EN 12956 EN 233	-	-	-	-
Determination of antibacterial activity	ISO 22196	Tarkett Lino has naturally anti-bacterial properties against the most common bacteria, such as E-coli and MRSA			
Colours		15	105	ON REQUEST 105	45
SUSTAINABILITY PERFORMANCES		STANDARDS			
EPD	ISO 14025	-	Carbon negative from cradle to gate (A1-A3)		
Renewable electricity		100%	100%	100%	100%

ISO 24011 (EN 548) **One single layer** calendered linoleum on jute backing
EN 686 Linoleum on a foam backing
EN 687 Linoleum on a corkment backing

Veneto Sicuro xf ² R10 2.5mm ON REQUEST	Linoleum Conductive xf ² 2.5mm	Linoleum SD Static Dissipative xf ² 2.5mm	Veneto xf ² 3.2mm	Silencio xf ² 3.8mm - 19dB	Veneto Acoustic Cork xf ² 4.4mm - 15dB ON REQUEST	LinoWall 2mm
Yes	Yes	Yes	Yes	Yes	Yes	EN 15102
Classes: 23/34/43	Classes: 23/34/43	Classes: 23/34/43	Classes: 23/34/43	Classes: 23/33/41	Classes: 23/34/42	-
xf ²	xf ²	xf ²	xf ²	xf ²	xf ²	xf ²
2.5 mm	2.5 mm	2.5 mm	3.2 mm	3.8 mm	4.4 mm	2.0 mm
ca. 2 900 g/m ²	ca. 2 900 g/m ²	ca. 2 900 g/m ²	ca. 3 800 g/m ²	ca. 3 350 g/m ²	ca. 4 500 g/m ²	ca. 2 900 g/m ²
≤ 0.15 mm ca. 0.08 mm	≤ 0.15 mm ca. 0.08 mm	≤ 0.15 mm ca. 0.08 mm	≤ 0.15 mm ca. 0.10 mm	≤ 0.30 mm ca. 0.20 mm	≤ 0.40 mm ca. 0.25 mm	-
≤ 30 mm Ø	≤ 30 mm Ø	≤ 30 mm Ø	≤ 40 mm Ø	≤ 30 mm Ø	≤ 30 mm Ø	-
≤ 32 x 2 m	≤ 32 x 2 m	≤ 32 x 2 m	≤ 32 x 2 m	≤ 32 x 2 m or ≤ 32 x 1.95 m (subject to availability-please check upon order)		≤ 16 x 2 m / on demand cut at 1 m
C _{fl} -s1	B _{fl} -s1	C _{fl} -s1	C _{fl} -s1	C _{fl} -s1	C _{fl} -s1	B-s2 d0
-	-	-	-	-	-	CITg(4min.) = 0,06 and CITg(8min.) = 0,09 testing with irradiance of 50 KW/m ² without pilot flame
6 dB	6 dB	6 dB	8 dB	19 dB	15 dB	-
Class C < 85 dB	Class C < 85 dB	Class C < 85 dB	Class B < 75 dB	Class A < 65 dB	Class B < 75 dB	-
14 dB	Not applicable	Not applicable	15 dB	Not applicable	Not applicable	-
Suitable for office chairs with castors type W (Norm EN 12529)						-
< 2 kV	< 2 kV	< 2 kV	< 2 kV	< 2 kV	< 2 kV	< 2 kV
-	R1 ≤ 10 ⁹ Ω	R1 ≤ 10 ⁹ Ω	-	-	-	-
-	R2 ≤ 10 ⁹ Ω	R2 ≤ 10 ⁹ Ω	-	-	-	-
-	R ≤ 10 ⁹ Ω	1x10 ⁹ < R < 1x10 ¹⁰ Ω	-	-	-	-
-	R ≤ 10 ⁹ Ω	R ≤ 10 ⁹ Ω	-	-	-	-
-	-	-	-	-	-	Resistant to impacts
DS: ≥ 0.30 R10	DS: ≥ 0.30 R9	DS: ≥ 0.30 R9	DS: ≥ 0.30 R9	DS: ≥ 0.30 R9	DS: ≥ 0.30 R9	-
Resistant to dilute acids, oils, facts, current solvents and alkalis						-
0.17 W/(m ² K) Suitable	0.17 W/(m ² K) Suitable	0.17 W/(m ² K) Suitable	0.17 W/(m ² K) Suitable	0.10 W/(m ² K) Suitable	0.17 W/(m ² K) Suitable	0.11 W/(m ² K) -
≥ 6	≥ 6	≥ 6	≥ 6	≥ 6	≥ 6	≥ 6
-	-	-	-	-	-	Extra washable
Tarkett Lino has naturally anti-bacterial properties against the most common bacteria, such as E-coli and MRSA						-
ON REQUEST: 41	1	2	15	21	ON REQUEST: 41	10
Carbon negative from cradle to gate (A1-A3)	-	-	-	-	Carbon negative from cradle to gate (A1-A3)	-
100%	100%	100%	100%	100%	100%	100%

Acoustic Cork 93% Natural Ingredients 77% Renewable Resources 33% Recycled Content ≤ 10 µg/m³ Optimal Indoor Air Quality	Originale 97% Natural Ingredients 77% Renewable Resources 30% Recycled Content ≤ 10 µg/m³ Optimal Indoor Air Quality	Trentino 94% Natural Ingredients 76% Renewable Resources 36% Recycled Content ≤ 10 µg/m³ Optimal Indoor Air Quality						
Conductive 96% Natural Ingredients 58% Renewable Resources 18% Recycled Content ≤ 10 µg/m³ Optimal Indoor Air Quality	SD Static Dissipative 98% Natural Ingredients 58% Renewable Resources 18% Recycled Content ≤ 10 µg/m³ Optimal Indoor Air Quality	Veneto 94% Natural Ingredients 76% Renewable Resources 36% Recycled Content ≤ 10 µg/m³ Optimal Indoor Air Quality						
Elafono (underlayer) 100% Natural Ingredients 85% Renewable Resources 34% Recycled Content ≤ 100 µg/m³ Better Indoor Air Quality	Silencio 83% Natural Ingredients 65% Renewable Resources 40% Recycled Content ≤ 10 µg/m³ Optimal Indoor Air Quality							
Etrusco 94% Natural Ingredients 76% Renewable Resources 36% Recycled Content ≤ 10 µg/m³ Optimal Indoor Air Quality	Style 94% Natural Ingredients 76% Renewable Resources 36% Recycled Content ≤ 10 µg/m³ Optimal Indoor Air Quality							

The above information is subject to modification for the benefit of further improvement. November 2020

DISCLAIMER: Although the utmost care is taken, the data here given could differ and be subject to modifications from a technical point of view. In its strive to improve its floor solutions, Tarkett reserves the right to modify its technical specifications, colours and materials at any moment and without prior notice. Please, check the effective availability of the products presented at the time of order. Due to the technical limits of reproduction and printing techniques used, the appearance (colour) of the product may vary from the samples, panels or other visual display materials exhibited to the customer. It is mandatory to have the products installed properly if they are to service correctly and safely. Refer to Tarkett technical installation and maintenance directions, available at www.tarkett.com or at your Tarkett dealer.

***Elafono** : 2,0mm traditional, 100% natural corkment underlay to be installed in combination with any compact Tarkett linoleum to get additional sound reduction (up to 15dB, depending on the product). Available in rolls ≤32 x 2m.

SUSTAINABILITY

Tarkett was the first linoleum flooring manufacturer to be Cradle to Cradle Certified® - underlining our strong commitment to sustainability.

Product certifications



Originale Essenza*, Veneto Essenza* 100% linen, Elafono underlayer



All our linoleum ranges (except SD Static Dissipative xf² and Linoleum Conductive xf² ranges)

International certifications



*Information sur le niveau d'émission de substances volatiles dans l'air intérieur, présentant un risque de toxicité par inhalation, sur une échelle de classe allant de A+ (très faibles émissions) à C (fortes émissions).



www.blauer-engel.de/uz120



*Carbon biobased



**Carbon biobased certificate 8C226



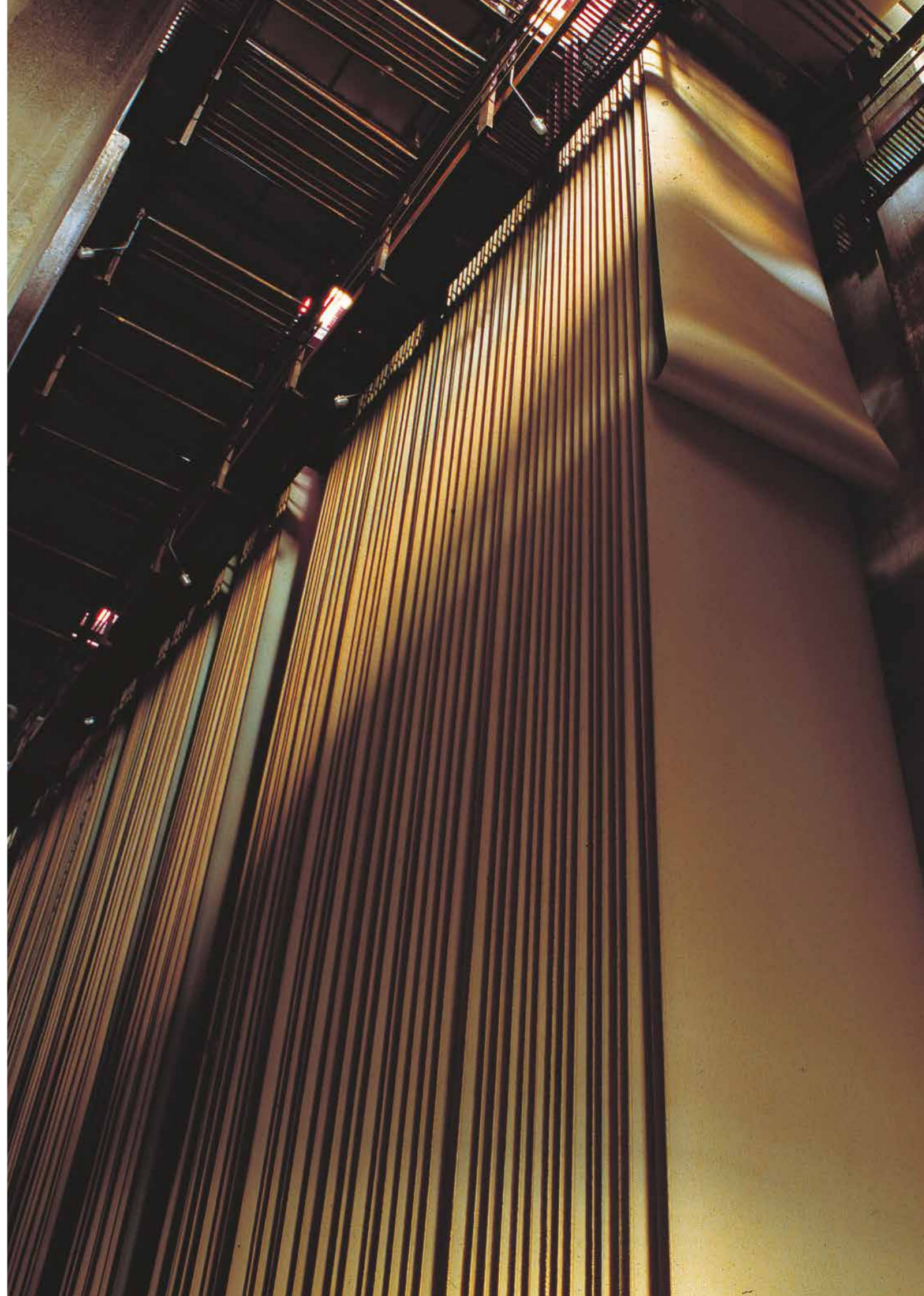
Certificate n. DIC-00017



Factory certifications



All our linoleum products are eligible for LEED v4 credits. For more information: <http://www.c2ccertified.org/products/registry>





TARKETT HUMAN-CONSCIOUS DESIGN™

Tarkett Human-Conscious Design™ is our pledge to stand with present and future generation. To create flooring and sports surfaces that are good for people and for the planet. And to do it every day.

We deliver on this through the synergy of three commitments:

- Deep human understanding
- Conscious choice. For people and the planet.
- With you. Every step of the way.

■ **WESTERN EUROPE:** Austria: Tarkett Holding GmbH, Niederlassung Wien - Tel. +43 1 716 44 0 ■ Belgium: Tarkett Belux Sprl - Tel. +32 52 26 24 11 ■ Denmark: Tarkett A/S - Tel. +45 43 90 60 11 ■ Finland: Tarkett Oy - Tel. +358 9 4257 9000 ■ France: Tarkett SAS - Tel. +33 1 41 20 42 49 ■ Germany: Tarkett Holding GmbH - Tel. +49 621 68172 300 ■ Greece: Tarkett Monoprosopi Ltd - Tel. +30 210 6745 340 ■ Italy: Tarkett S.p.A. - Tel. +39 0744 7551 ■ Luxembourg: Tarkett GDL SA - Tel. +352 949 211 8804 ■ Netherlands: Tarkett BV - Tel. +31 416 685 491 ■ Norway: Tarkett AS - Tel. +47 32 20 92 00 ■ Portugal: Tarkett SA - Tel. +351 21 427 64 20 ■ Spain: Tarkett Floors S.L. - Tel. +34 91 358 00 35 ■ Sweden: Tarkett Sverige AB - Tel. +46 771 25 19 00 ■ Switzerland: Tarkett Holding GmbH - Tel. +41 43 233 79 24 ■ Turkey: Tarkett Aspen - Tel. +90 212 213 65 80 ■ United Kingdom: Tarkett Ltd - Tel. +44 (0) 1622 854 040 ■ **EASTERN EUROPE:** Baltic Countries: Estonia: Tel. +372 55515880 - Latvia: Tel. +37126112014 - Lithuania: Tel. +370 37 262220 ■ Czech Republic: Tarkett org. složka - Tel. +420 271 001 600 ■ Hungary: Tarkett Polska SP Z.O.O. magyarországi fióktelepe - Tel. +36 1 437 8150 ■ Poland: Tarkett Polska Sp. z o. o. - Tel. +48 22 16 09 231 ■ Russian Federation: ZAO Tarkett RUS - Tel. +7 495 775 3737 ■ Slovakia: Tarkett Polska, organizačná zložka - Tel. +421 2 48291 317 ■ **South East Europe:** Tarkett SEE - Tel. +381 21 7557 649 (44) 569 12 21 ■ Ukraine: Tarkett UA - Tel. +38 (0) 44 35 45 621 ■ **ASIA AND OCEANIA:** Australia: Tarkett Australia Pty Ltd - Tel. +61 2 88 53 12 00 ■ China: Tarkett Floor Covering (Shanghai) Co. Ltd. - Tel. +86 (21) 60 95 68 38 ext 841 ■ **North East Asia:** Tarkett Hong Kong Limited - Tel. +852 2511 8716 ■ India: Tarkett Flooring India Pvt. Ltd. - Bangalore - Tel. +91 80 4130 3793 - New Delhi - Tel. +91 11 4352 4073 - Mumbai - Tel. +91 22 2648 8750 ■ **South East Asia:** Tarkett Flooring Singapore Pte. Ltd. - Tel. +65 6346 1585 ■ **AFRICA:** Tarkett International: Tel. +33 1 41 20 41 01 ■ **MIDDLE EAST:** Tarkett Middle East: Tel. +961 1 51 3363/4 ■ Israel: Tarkett International: Tel. +33 1 41 20 41 01 ■ **NORTH AMERICA:** USA: Tarkett Inc. - Tel. +1 713 869 5811 / Johnsonite - Tel. +1 440 543 8916 ■ Canada: Tarkett Inc. - Tel. +1 450 293 173 ■ **LATIN AMERICA:** Brazil: Tarkett - Tel. 55 12 3954 7108 ■ Argentina - Chile - Uruguay: Tarkett Latam Mercosur - Tel. +54 11 47 08 07 72 / +54 9 11 44 46 88 82 ■ Bolivia - Colombia - Ecuador - Panama - Paraguay - Peru - Trinidad and Tobago - Venezuela: Tarkett - Tel. +55 11 9 8410 9310 / +55 11 95494 0069 ■ Mexico /Central America: Tarkett Latam Mexico - Tel. +55 11 98410 9310

The designs and photos used in this brochure are for illustration purposes only. They are not contractual images and do not stand for product recommendation.
Design: AgenceGecko / Photo Interior design: En Bande Organisée - Photo: Mario Simon Lafleur - @bfstudioparis - Illustration: Anna Pepe, Forn Studio
Product sourcing: Hay - Serax - Flos - MAG: The Conran Shop - Twentytwentyone - Moustache / Print: Altavia

www.professionals.tarkett.com



 **Tarkett**